

NOTE:

- (1) ROD ELECTRODE = 1 NOS./PHASE
- (2) NO. OF RISERS = 2 NOS PER PHASE FOR PT.
- (3) NO. OF RISERS FOR PT JUNCTION BOX = 2 NOS.



EQUIPMENT EARTHING DETAILS

66KV PT

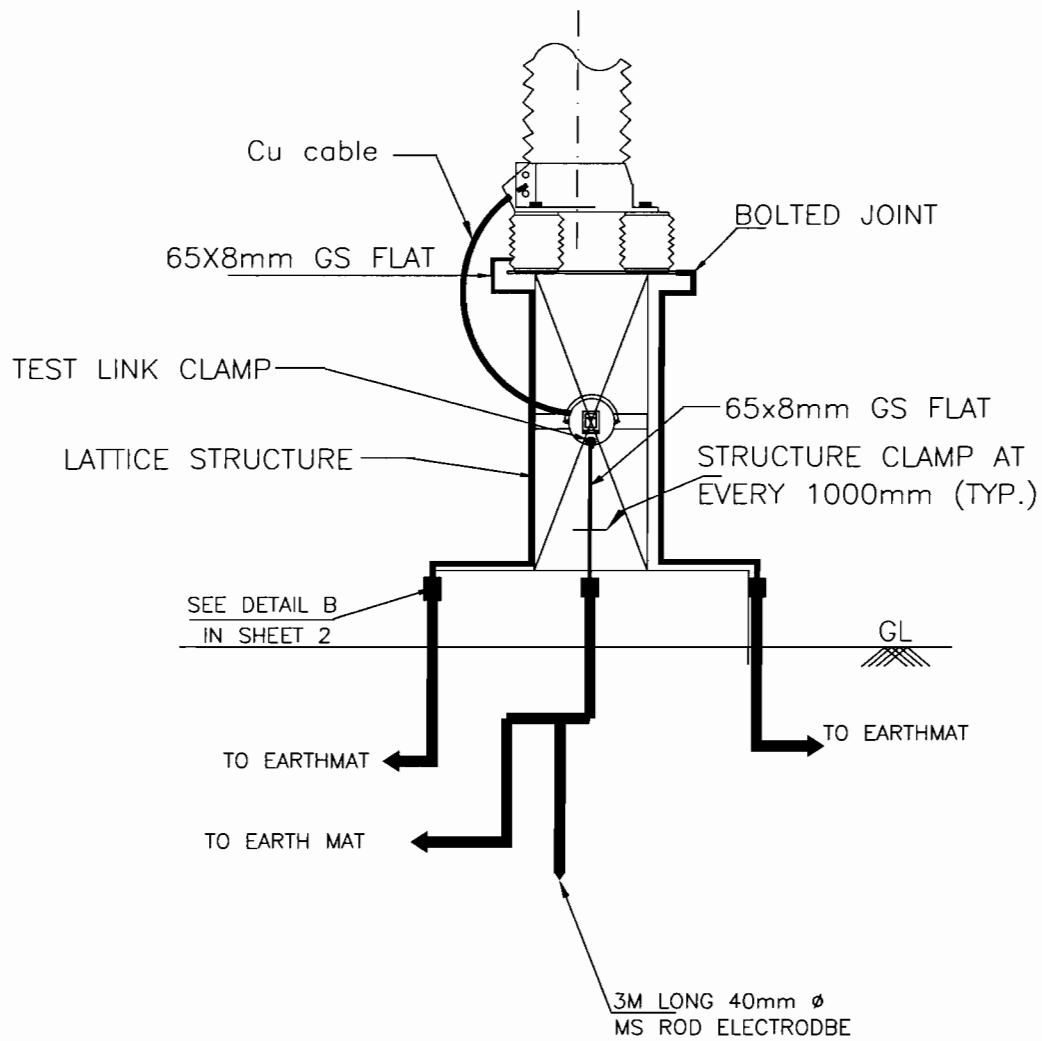
COMPUTERREF.NO.

DRG. No.

TB-4-352-316-008

REV. 00

SHEET No.
3



NOTES;

1. LA SHALL BE EARTHED THROUGH EARTH TERMINAL OF SURGE COUNTER
2. NO. OF ROD ELECTRODE 1 NO. PER PHASE,
3. TEST LINK SHALL HAVE PROVISION TO BOLT TEST LEAD BEFORE ISOLATING THE MAIN EARTHING CONNECTIONS.
4. NO. OF RISERS= 3 NOS. PER PHASE



EQUIPMENT EARTHING DETAILS
LIGHTNING ARRESTER(60kV)

COMPU. DRG. REF.

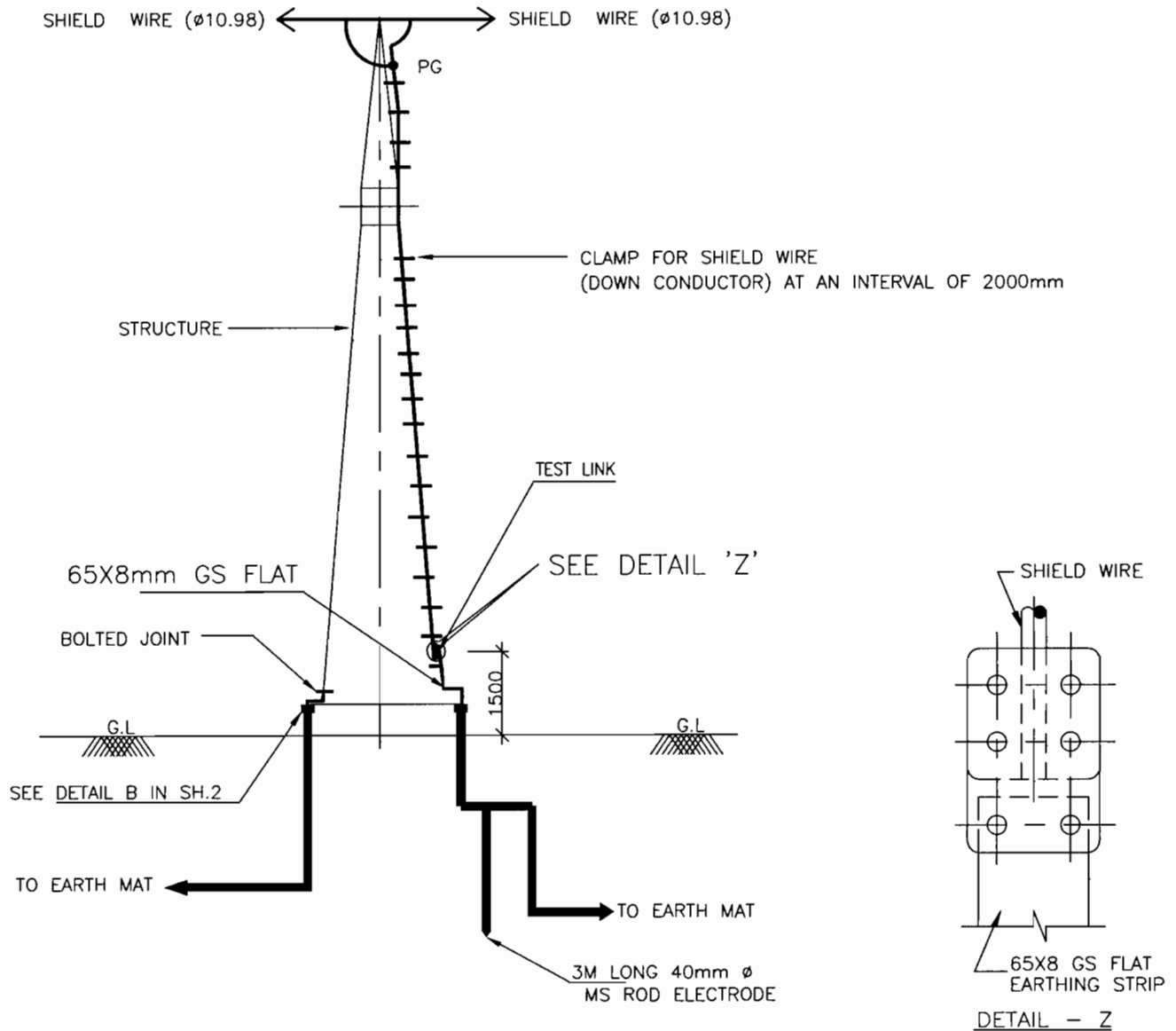
DRG.NO.

TB-4-352-316-008

REV. 00

SHEET No.

5



NOTE:

1. NO. OF ROD ELECTRODE : 1 NO. PER TOWER WITH DOWN CONDUCTOR.
2. NO. OF RISERS 2 NOS. / TOWER



EQUIPMENT EARTHING DETAILS
TOWER WITH SHIELD WIRE

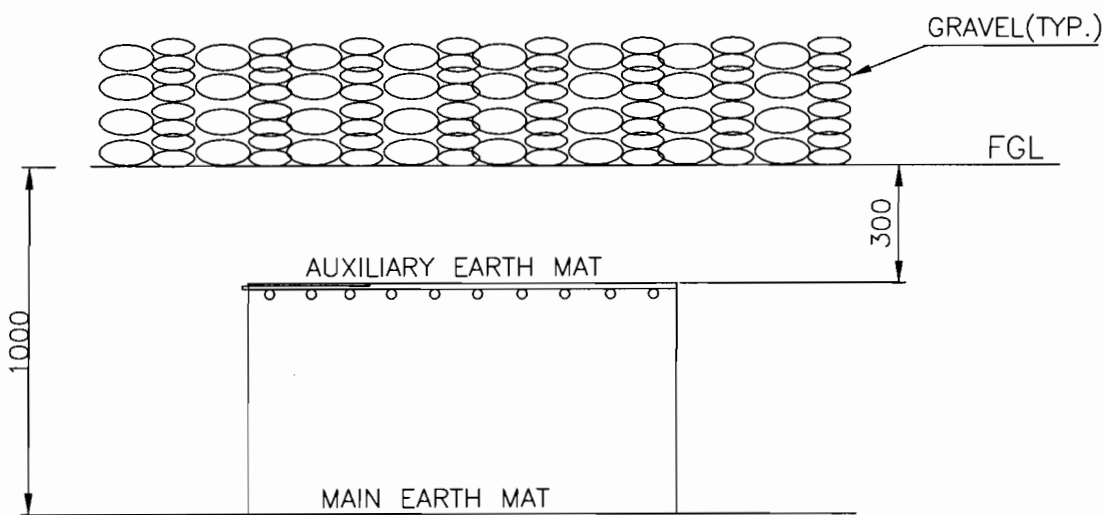
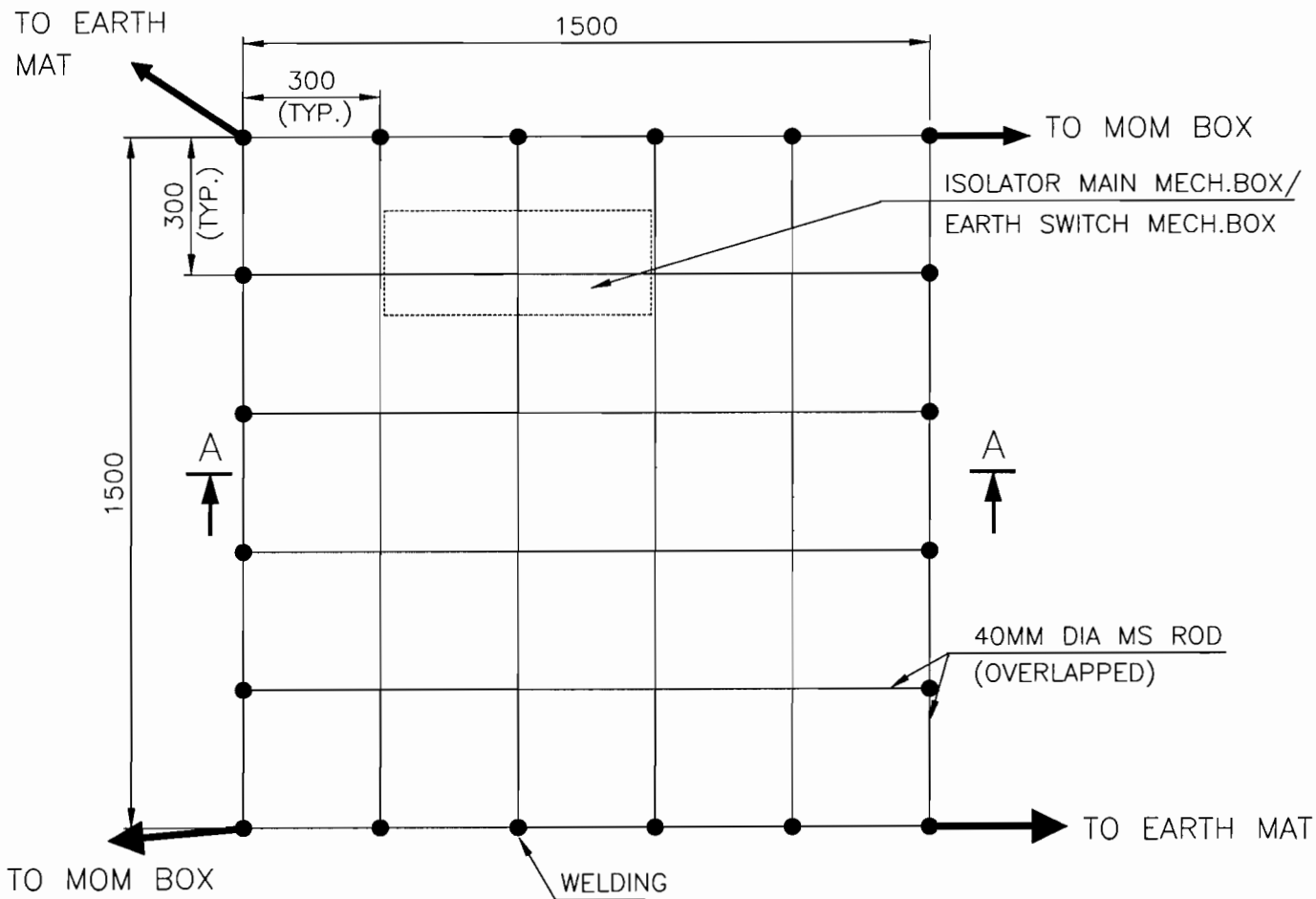
COMPUTERREF.NO.

DRG. No.

TB-4-352-316-008

REV. 00

SHEET No.
8



SECTION AA

NOTE:

AUX. EARTH MAT SHALL BE SO POSITIONED THAT THE FOOT OF THE OPERATOR ALWAYS LIE OVER THE AUX. EARTH MAT AREA WHILE ATTENDING / OPERATING THE MECH. BOX THE CABLE TRENCH ROUTING SHALL BE PLANNED ACCORDINGLY.



EQUIPMENT EARTHING DETAILS
 AUXILIARY EARTH MAT FOR ISOLATOR MAIN MECH., E/S
 MECH. BOX

COMPU. DRG. REF.

Report No.

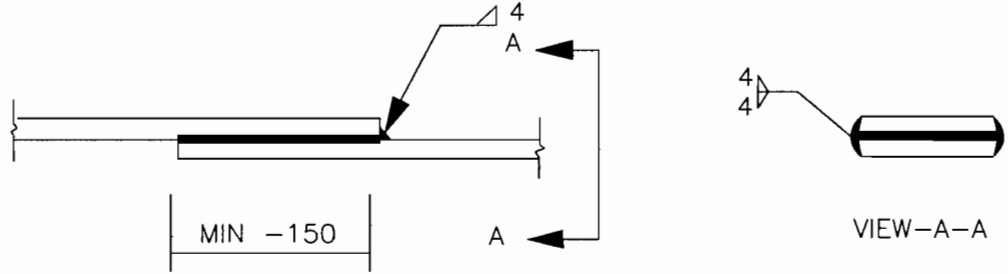
TB-4-352-316-008

REV. 00

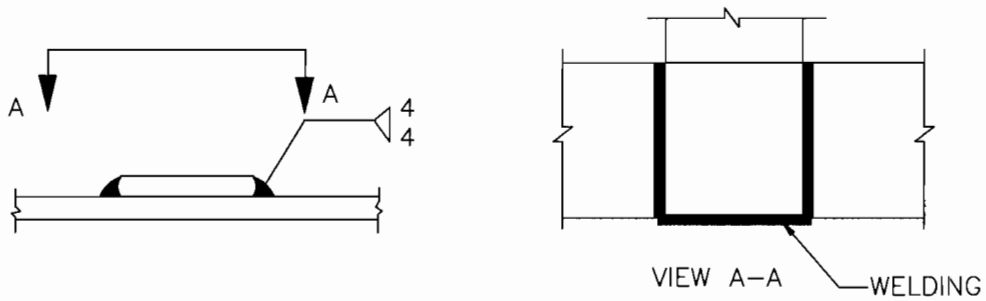
SHEET No.
11

STRIP TO STRIP

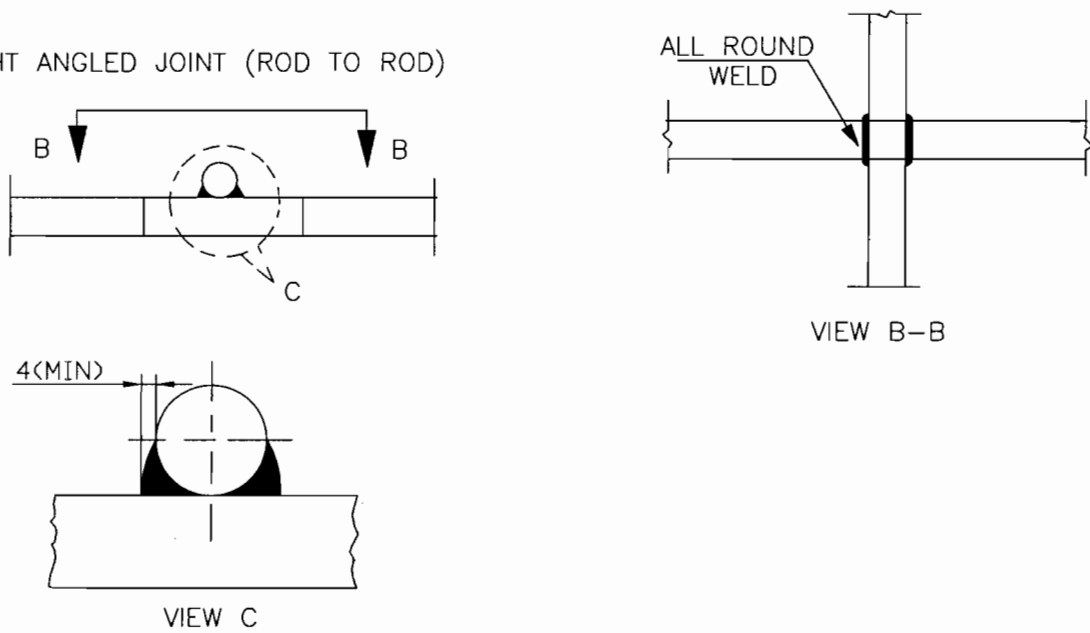
1. STRAIGHT LAP JOINT/RISER



2. CROSS LAP JOINT



RIGHT ANGLED JOINT (ROD TO ROD)



EQUIPMENT EARTHING DETAILS WELDING DETAIL

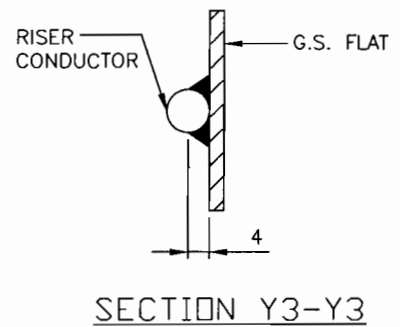
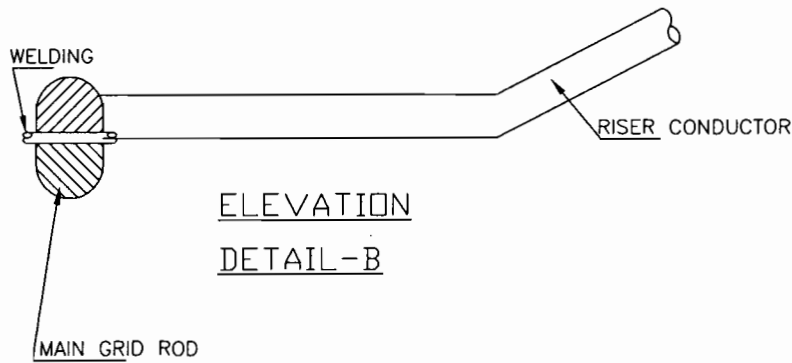
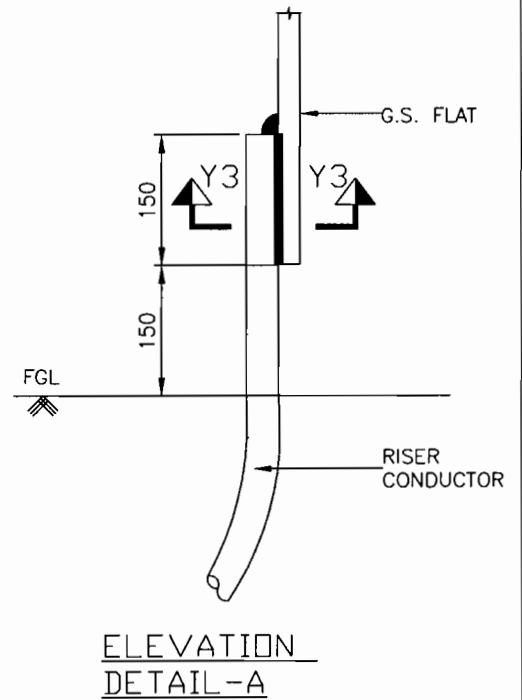
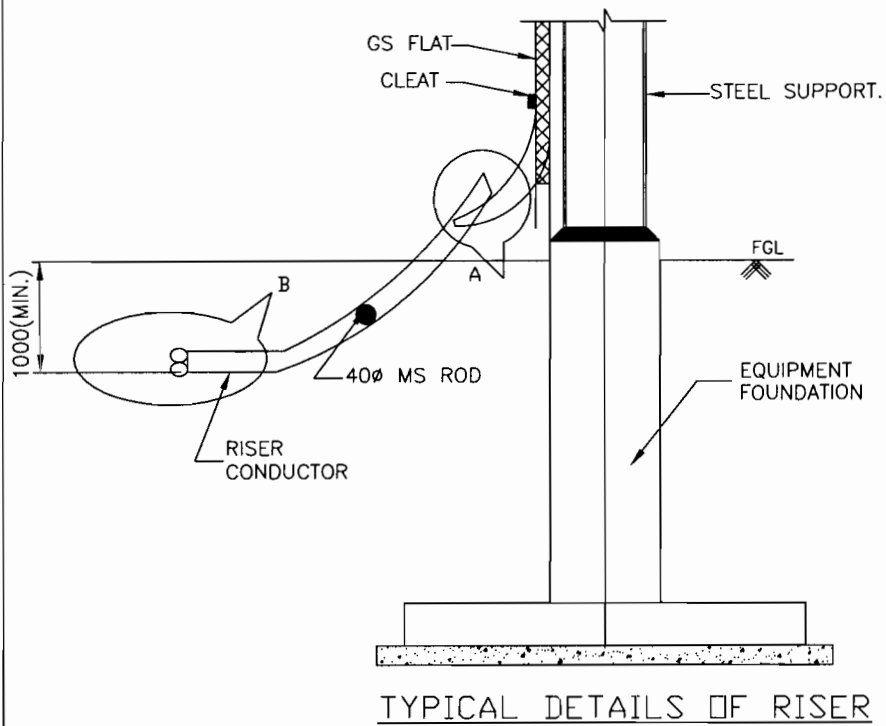
COMPUTERREF.NO.

DRG. No.

TB-4-352-316-008

REV. 00

SHEET No.
15



EQUIPMENT EARTHING DETAILS
WELDING DETAILS

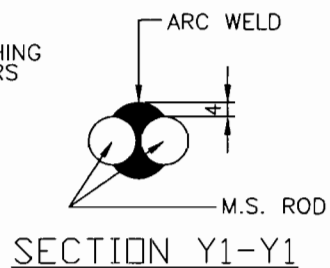
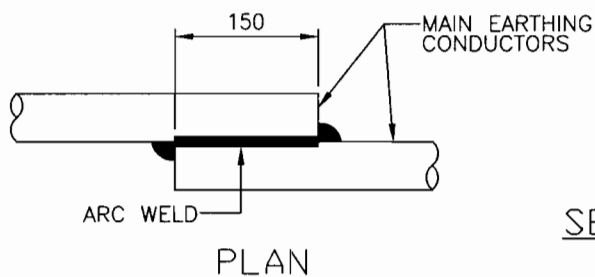
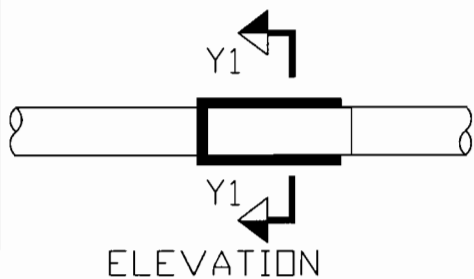
COMPUTERREF.NO.

DRG. No.

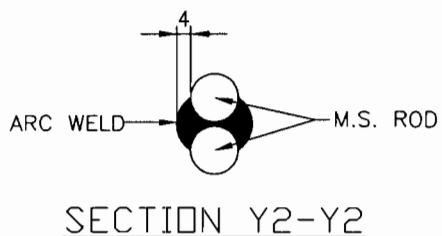
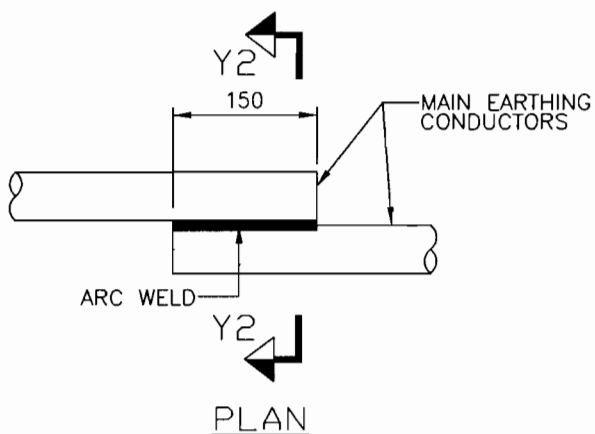
TB-4-352-316-008

REV. 00

SHEET No.
16



<CONDUCTOR IN HORIZONTAL PLANE>



<CONDUCTOR IN VERTICAL PLANE>



EQUIPMENT EARTHING DETAILS
WELDING DETAILS

COMPUTERREF.NO.

DRG. No.

TB-4-352-316-008

REV. 00

SHEET No.
17